

EDGE^{PLUS} SERIES

UNCOVER THE MICROSCOPIC WORLD



A look into the new member of the Dino-Lite family, Edge^{PLUS} series

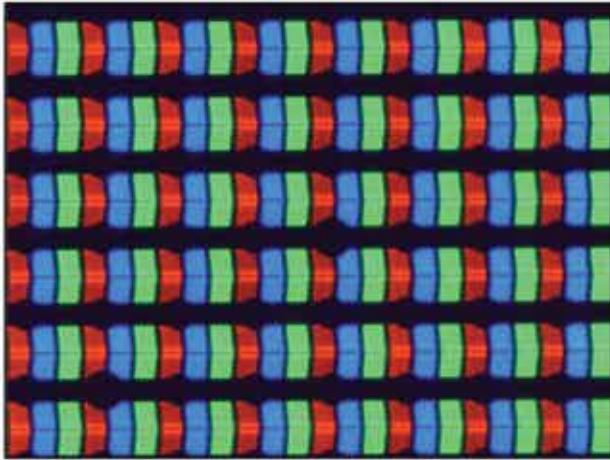
provides users an indispensable tool for inspection, analysis, and image documentation.



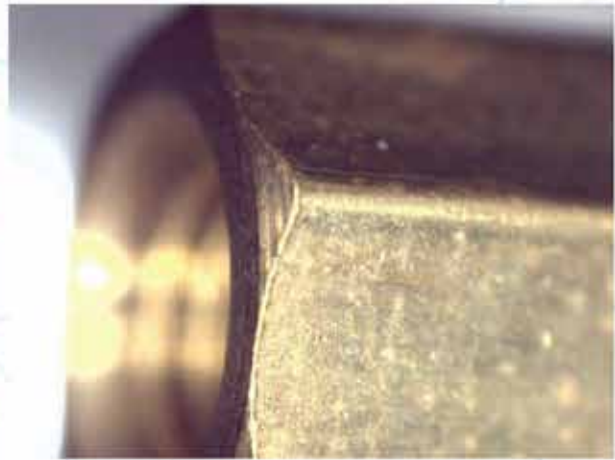
High-quality imaging with Edge^{PLUS} series

Color fidelity

offers unrivaled natural-looking color images.



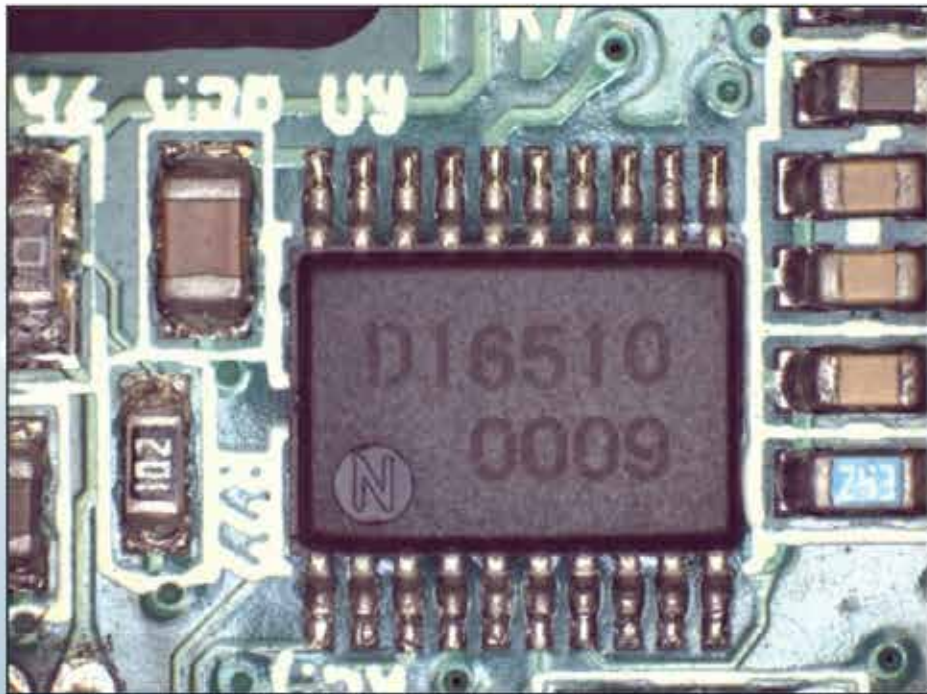
RGB LED screen



Screw nut

Contrast

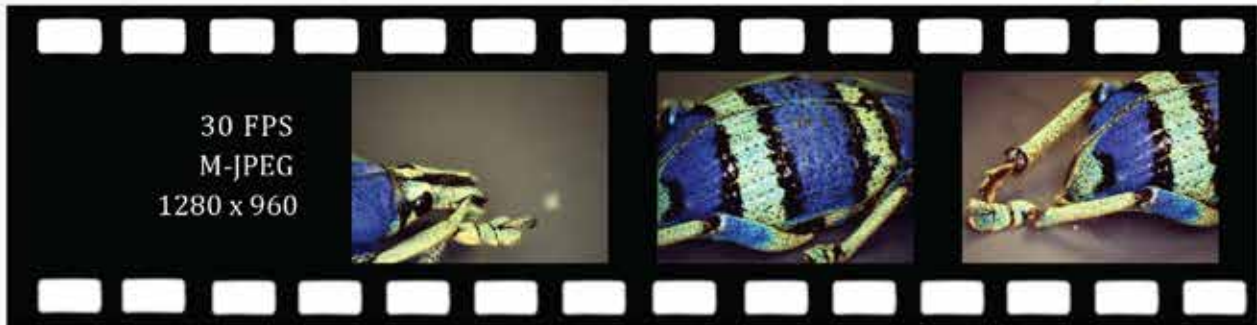
clearer image details.



PCB

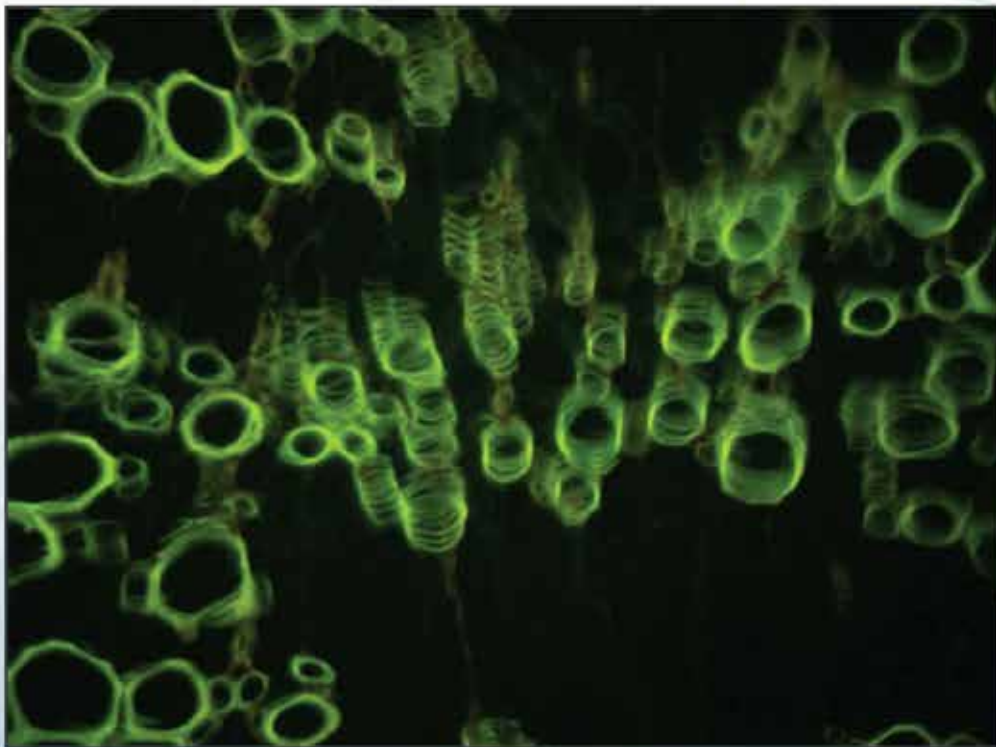
Frame rate

higher-quality live imaging.



High sensitivity

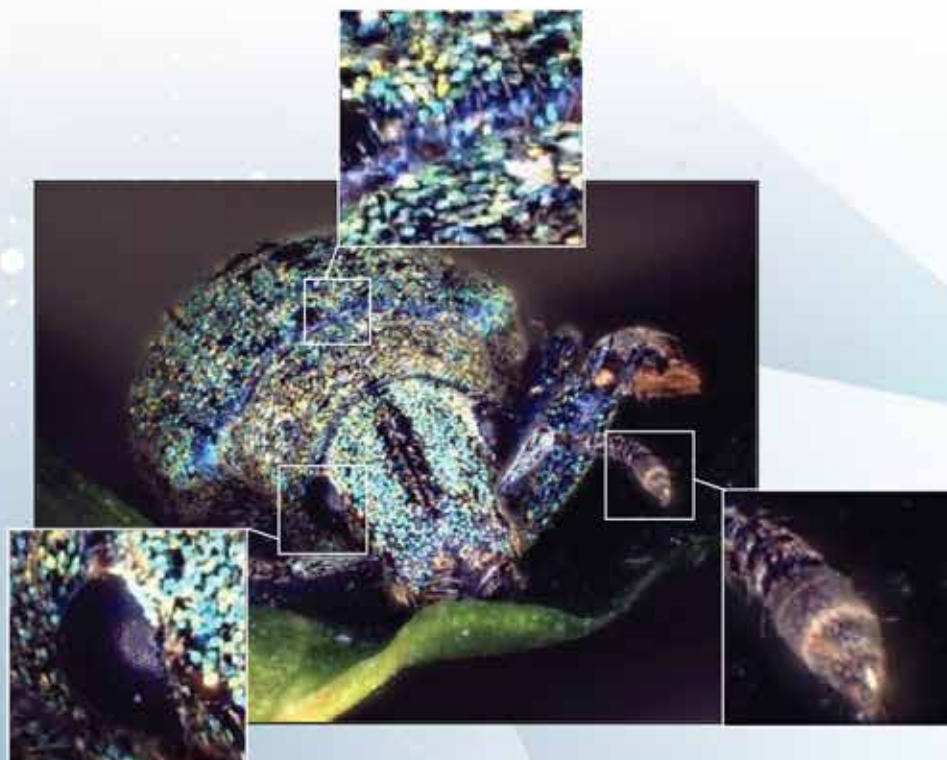
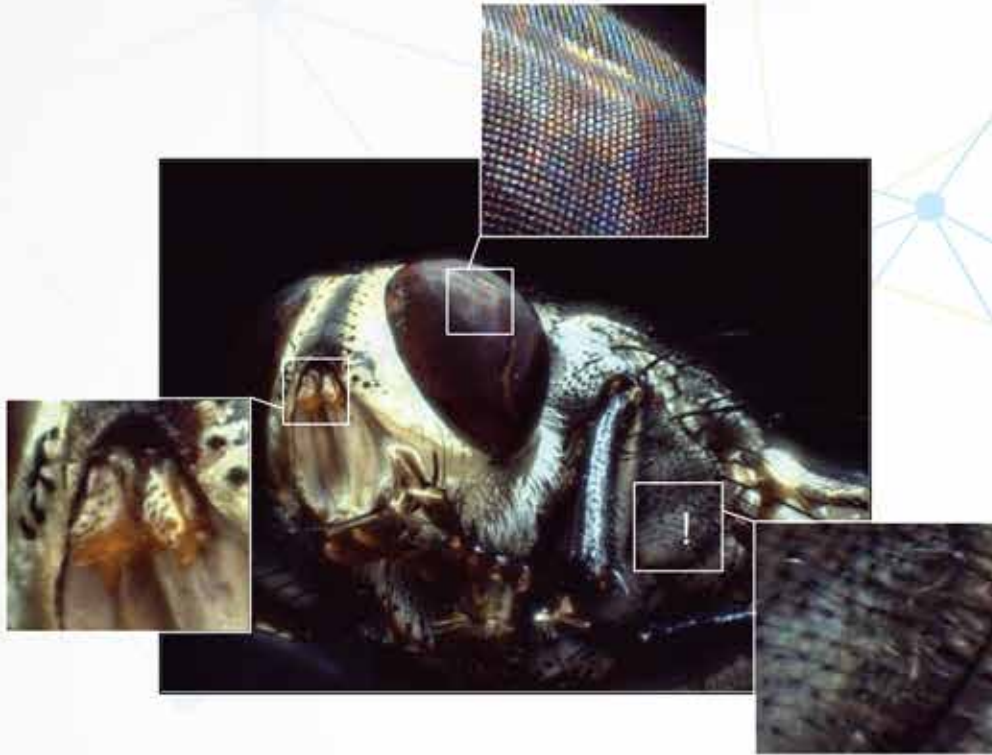
sensors detect faint features.



Spinacea oleracea

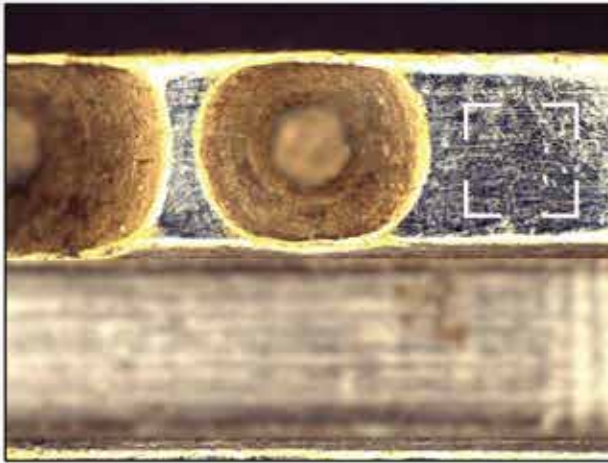
Improved ED OF

further improved optics and delicate focus control.

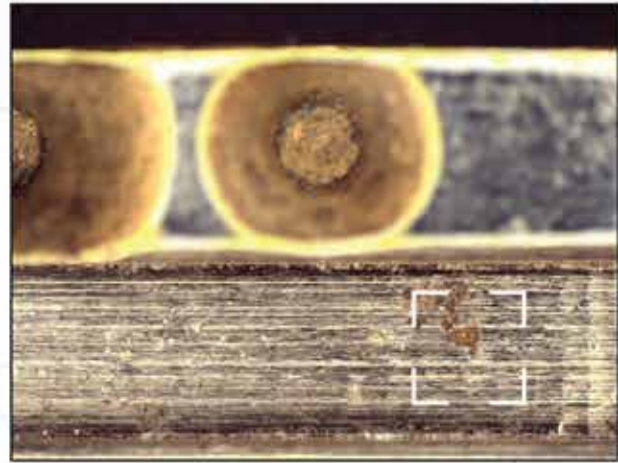


Depth Information

can obtain depth information of grooves, holes.



Focus shift = 0mm



Focus shift = 2.85mm

Design and appearance

Metal housing

Designed for robustness and endurance



Metal housing

Detachable cable

enhances the Dino-Lite reliability.



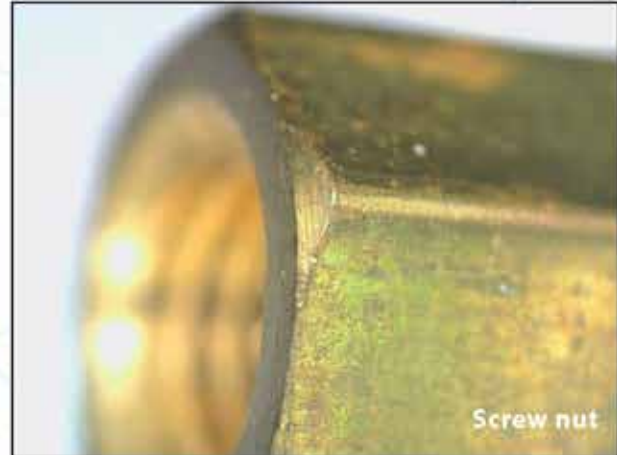
Detachable cable

Image comparison with 1.3MP Edge series

Improved color fidelity



Edge^{PLUS} series



1.3MP Edge series

Enhanced contrast



Edge^{PLUS} series



1.3MP Edge series