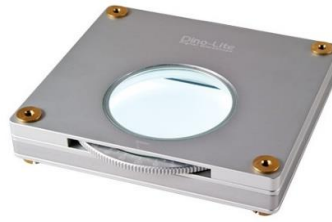


BL-ZW1



BL-ZW1

The BL-ZW1 is a back light illumination table with adjustable polarization for the Dino-Lite.

Please note that the polarizing feature has to be used with the Dino-Lite digital microscope with polarizing abilities; such as the AM4113ZT or the AD4113ZT handheld digital microscope. An optional accessory that can be attached to the BL-ZW1 is the BL-GC1 Gem Clip (The BL-GC1 Gem Clip is sold separately).

The polarizing ability of the BL-ZW1 can be used for many applications such as but not limited to geology (examining thin rock sections), metallurgy, and chemistry. For a business owner point of view, it can be used for jewelers for inspecting and presenting jewelry/ gems. The BL-ZW1 polarizing ability can also be useful for industrial applications; such as inspecting flexible circuit boards (FPC) for flaws and defects.



Adjustable polarization

Useful for suppressing glare from reflective materials, such as metals, plastics, or glass, and applicable in dermatology for observing the sub dermal layer of skin.

SPECIFICATIONS

Model	BL-ZW1 Dino-Lite Backlight Pad
Polarizer	Yes
Unit Dimension	10cm (L) x 9cm (W) x 2cm (H)
Package Dimensions	16cm(L) x 16cm(W) x 6cm (H)

GALLERY



Accessories BL-ZW1
Demo 1



Accessories BL-ZW1
Demo 2



Accessories BL-ZW1
Demo 3



Dpro Vision Sdn Bhd
B-08-03, Dataran 32, No.2, Jalan 19/1, 46100 Petaling Jaya, Selangor.
Tel : 03-7960 4710 / Email : sales@dprovision.com / Website : www.dprovision.com

