

BL-CDW



BL-CDW

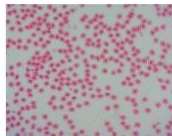
By easily configuring with Dino-Lite, the BL-CDW transmitted-light illuminator provides alternative ways to enhance the contrast of specimen with bright field and dark field modes.

The bright field mode of BL-CDW, which produces a collimated beam of light with no adjustment required, largely reduces the scattered light and therefore may reveal more detail comparing to a diffused backlight.

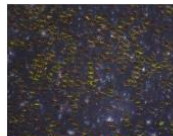
SPECIFICATIONS

Model	BL-CDW Backlight Illuminator
Unit Weight	approx. 178 g = 0.4 lb. 6.27 oz.
Unit Dimension	51 mm (H) x 54.3 mm (Dia)
Package Dimensions	16 cm (L) x 16 cm (W) x 6 cm (H)

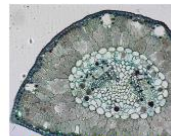
GALLERY



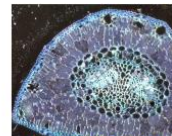
Red Blood Cells of a frog at 900x with Brightfield light



Red Blood Cells of a frog at 900x with dark field light



Pine Tree Leaf at 500x with bright field light



Pine Tree Leaf at 500x with dark field light



Dicotyledon Stem at 120x with bright field light



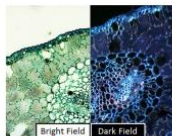
Dicotyledon Stem at 120x with dark field light



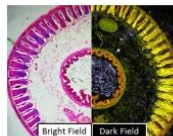
Earthworm slide at 100x with bright field light



Earthworm slide at 100x with dark field light



Bright field light & Dark field light



Bright field light & Dark field light



BL-CDW



BL-CDW