

# N3C-R (Ring Light Cap)



## N3C-R (Ring Light Cap)

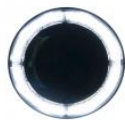
In most macro observation, a ring light may help to reveal more details by generating shadow-less illumination. Working seamlessly with the Dino-Lite Edge series, the N3C-R front cap is a unique and the simplest solution designed to provide ring illumination for a microscope. The 6.5 cm (2.5 inch) diameter N3C-R fully utilizes the Dino-Lite's built-in LEDs by redirecting it to form a focused, diffused, and uniform ring-light. For polarizer model such as AM4115ZT, the polarizer can still be used for suppressing the unwanted glare or reflection when using with N3C-R. Without the clutter of mounting and powering an external ring light, thus no heat and noticeable weight been added, the clip-on N3C-R economically provides alternative illumination and adds more flexibility to Dino-Lite's applications.

Note: The N3C-R has best working distance in the range of about 2 to 15 cm. It may not be suitable for short working distance operation, and is not compatible with high magnification models such as AM4515T5 or AM4515T8.

### SPECIFICATIONS

Model	N3C-R Ring Light Cap
Unit Weight	approx. 8 g
Unit Dimension	15.5 mm (H) x 65 mm (D)
Compatible Dino-Lite Models	Dino-Lite Edge LWD models (TL, ZTL)
Materials	Polycarbonate with sputtered aluminum coated

### GALLERY



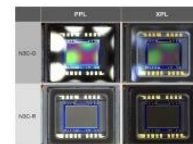
Ring light projected through N3C-R



Dino-Lite EDGE with N3C-R



RK-10 & Dino-Lite EDGE with N3C-R



Reflection or glare comparison of using N3C-R, polarizer, and both



Reflection or glare comparison of using N3C-R, polarizer, and both



PCB 1



PCB 2



PCB 3



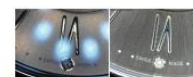
Coin 1



Coin 2



IC



Watch

