

N3C-A (Coaxial Light Cap)



N3C-A (Coaxial Light Cap)

Answering the need of coaxial illumination, the N3C-A is designed to form coaxial front light simply by replacing the front cap of Dino-Lite Edge models. The coaxial front light, formed by mirroring the light of Dino-Lite with a beam splitter, may help to highlight scratches and dents from reflective surface, or to suppress shadowing when looking at object behind a deep hole. The compact and innovative design makes it an indispensable accessory for many critical inspection applications.

SPECIFICATIONS

Model	N3C-A Coaxial Light Cap
Unit Weight	approx. 6 g
Unit Dimension	18.5mm (H) x 30.3mm (D)
Compatible Dino-Lite Models	Dino-Lite Edge LWD models (TL, ZTL)
Note	The working distance of Dino-Lite attached with N3C-A will be reduced by 5mm. Some magnification range of standard models could thus be obscured from using.
Materials	Polycarbonate

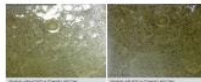
GALLERY



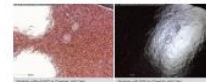
Coin



Metal



Old pottery



Painted Metal 1



Painted Metal 2



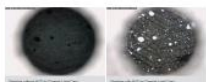
Painted Metal 3



Painted Metal 4



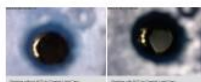
Painted Metal 5



Deep Hole 1



Deep Hole 2



Deep Hole 3



Deep Hole 4