

DINO - LITE *Edge 3.0*

AM73915MZTL

Model: **AM73915MZTL** Dino- Lite Edge 3.0



SPECIFICATIONS

Model	AM73915MZTL Dino-Lite Edge 3.0	Microtouch	Yes
Interface	USB 3.0	System Requirements	Intel® Core™ i5 3.2 GHz - 20GB available HD space - 8GB available RAM or more - 2GB video card or more - CD - ROM drive for installation - USB 3.0 with intel chipset
Product Resolution	5M pixels (2560 x 1920)		
Magnification	10x - 140x		
Frame Rate	15fps at 5MP, YUY2 (USB 3.0) 45fps at 1.3MP, YUY2 (USB 3.0) 15fps at 1.3MP, YUY2 (USB 2.0)		
Lighting	8 White LEDs	Calibration Function	Yes
Operating System Supported	Window 10, 8, 7 Mac OS 10.9 or later (EDOF/EDR are NOT controllable on Mac OS)	Measurement Function	Yes
		Unit Dimension	11.9cm (H) x 3.3cm (D)
		Unit Weight	110g

HIGHLIGHTS



High-Speed Transmission



High Optical Resolution



5.0 Megapixels



Long Working Distance (LWD) Optics



Extended Depth Of Field (EDOF)



Extended Dynamic Range (EDR)



Flexible LED Control (FLC)



Robust Housing



Automatic Magnification Reading (AMR)



Adjustable Polarizer



Scroll Lock

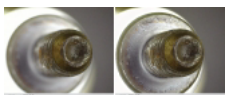


Interchangeable Caps

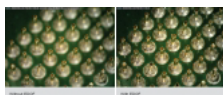
PRODUCT SUMMARY

The Dino-Lite Edge 3.0 AM73915MZTL, a USB 3.0 all-in-one device with LWD optics, allows to fulfill most demand and expectation of professionals. Taking the advantage of USB 3.0 high-speed transmission, the AM73915MZTL delivers fluid and uncompressed images with 15FPS at 5MP or 45FPS at 1.3MP resolutions. And yet, it added with sophisticated EDOF/EDR, AMR and FLC functionalities which can be used in a more demanding application.

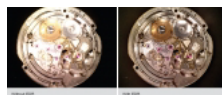
GALLERY



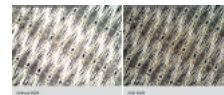
Componet



IC



Watch



Ply Metal



Also work with Accessory
- N3C - R
(Ring Light Cap)