

**DINO - LITE** *Edge*

Model: **AM7115MZT** Dino- Lite Edge

### SPECIFICATIONS

Model	AM7115MZT Dino-Lite Edge	System Requirements	<ul style="list-style-type: none"> <li>Intel Core2 Duo @ 2.20 GHz / AMD Athlon X2 Dual Core BE-2400 ( 2.3GHz )</li> <li>20GB available HD Space</li> <li>2GB available RAM or more</li> <li>512MB video card or more</li> <li>CD-ROM drive for installation</li> <li>USB 2.0</li> </ul>
Interface	USB 2.0		
Product Resolution	5M pixels (2592 x 1944)		
Magnification	20x - 220x		
Frame Rate	10fps in 5MP / 3MP/ 2MP, MJPEG 25fps in 1.3MP, MJPEG 30fps in VGA, MJPEG	Calibration Function	Yes
Lighting	8 white LEDs	Measurement Function	Yes
Microtouch	Yes	Unit Dimensions	10.5cm (H) x 3.2cm (D)
Operating System Supported	Window 10, 8, 7, Vista, XP MAC OS 10.4 or later	Unit Weight	125g

### HIGHLIGHTS



**High Optical Resolution**



**5.0 Megapixels**



**Flexible LED Control (FLC)**



**Adjustable Polarizer**



**Robust Housing**



**Scroll Lock**

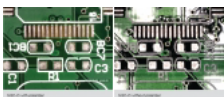


**Interchangeable Caps**

### PRODUCT SUMMARY

Designed to meet or exceed general professional needs, the Dino-Lite 5MP Edge AM7115MZT delivers unsurpassed image at wide magnification range from 20X to 220X with greatest illumination flexibility. Integrated with cutting-edge optics, advanced 5MP sensor, and low-loss MJPEG compression, the AM7115MZT allows displaying incredibly crisp and fluent image with low power consumption. The innovative Flexible LED Control (FLC) enables partial illumination to enhance edge contrast and provides intensity adjustability for better adaptability. Together with adjustable polarizer, interchangeable front caps, rugged metal housing, the AM7115MZT is made to be the tool of choice for wide range of applications.

### GALLERY



PCB



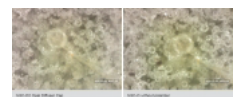
Watch



Gear



IC



Juware



This section microscope slide of rock and fossil



Slide of Hair Follicle



Diamond