



Model: **AM4815ZT** Dino- Lite Edge

## SPECIFICATIONS

Model	AM4815-ZT Dino-Lite Edge	Microtouch	Touch sensitive trigger on the microscope for taking picture
Interface	USB 2.0	Lighting	8 White LED lights switch On/Off by software
Product Resolution	1.3M pixels (SXGA)	Measurement Function	Yes
Magnification Rate	20x - 220x	Calibration Function	Yes
Sensor	Color CMOS	Operating System Supported	Window 10, 8, 7, Vista, XP MAC OS 10.4 or later
Frame Rate	Up to 30fps	Unit Weight	100g
Save Formats	Image DinoCapture 2.0 : BMP, GIF, PNG, MNG, TIF, TGA, PCX, WBMP, JP2, JPC, JPG, PGX, RAS, PNM DinoXcope : PNG, JPEG Movie DinoCapture 2.0 : WMV, FLV, SWF DinoXcope : MOV	Unit Dimensions	10.5cm (H) x 3.2cm (D)
		Package Dimensions	16cm (L) x 16cm (W) x 6cm (H)

## HIGHLIGHTS



**High Optical Resolution**



**Convenient Flexible Magnification**



**Adaptable Cap Design**



**Extended Depth Of Field (EDOF)**



**Polarizer**



**Extended Dynamic Range (EDR)**

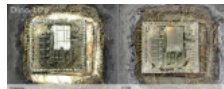
## PRODUCT SUMMARY

Innovate to meet most challenges. Adding to the high image quality of Dino-Lite Edge, the AM4815ZT with polarizer provides image processing features, EDOF and EDR, for further extending its limitation over depth of focus or dynamic range. AM4815ZT also has better adaptability to different applications with the detachable and exchangeable front cap design.

## GALLERY



EDR VS Without EDR



Comparison Of Full Polarization VS No Polarization Using EDR



EDOF With A Butterfly



EDOF With A Stacked Chips



EDOF ON A Watch



EDOF For Part Inspection