



Model: **AM4815T** Dino- Lite Edge

SPECIFICATIONS

Model	AM4815-T Dino-Lite Edge	Microtouch	Touch sensitive trigger on the microscope for taking picture
Interface	USB 2.0	Lighting	8 White LED lights switch On/Off by software
Product Resolution	1.3M pixels (SXGA)	Measurement Function	Yes
Magnification Rate	20x - 220x	Operating System Supported	Window 10, 8, 7, Vista, XP MAC OS 10.4 or later
Sensor	Color CMOS	Unit Weight	100g
Frame Rate	Up to 30fps	Unit Dimensions	10.5cm (H) x 3.2cm (D)
Save Formats	Image DinoCapture 2.0 : BMP, GIF, PNG, MNG, TIF, TGA, PCX, WBMP, JP2, JPC, JPG, PGX, RAS, PNM Movie DinoCapture 2.0 : WMV, FLV, SWF	Package Dimensions	16cm (L) x 16cm (W) x 6cm (H)

HIGHLIGHTS



High Optical Resolution



Convenient Flexible Magnification



Adaptable Cap Design



Extended Depth Of Field (EDOF)



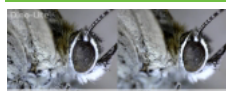
Extended Dynamic Range (EDR)

PRODUCT SUMMARY

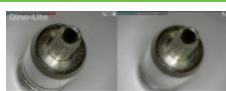
Innovate to meet most challenges. Adding to the high image quality of Dino-Lite Edge, the AM4815T provides image processing features, EDOF and EDR, for further extending its limitation over depth of focus or dynamic range.

AM4815T also has better adaptability to different applications with the detachable and exchangeable front cap design.

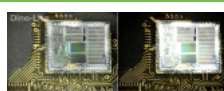
GALLERY



EDOF With A Butterfly



EDOF On A Connector



EDR With Decapped IC



EDOF With A Bee



EDOF With CPU Pins