



Model: **AM4515T5** Dino- Lite Edge

SPECIFICATIONS

Model	AM4515T5 Dino-Lite Edge	Microtouch	Touch sensitive trigger on the microscope for taking picture
Interface	USB 2.0	Measurement Function	Yes
Product Resolution	1.3M pixels (SXGA)	Calibration Function	Yes
Magnification Rate	500x - 550x	Operating System Supported	Window 10, 8, 7, Vista, XP MAC OS 10.4 or later
Sensor	Color CMOS	Unit Weight	100g
Frame Rate	Up to 30fps	Unit Dimensions	10.3cm (H) x 3.2cm (D)
Save Formats	Image DinoCapture 2.0 : BMP, GIF, PNG, MNG, TIF, TGA, PCX, WBMP, JP2, JPC, JPG, PGX, RAS, PNM DinoXcope : PNG, JPEG Movie DinoCapture 2.0 : WMV, FLV, SWF DinoXcope : MOV	Package Dimensions	16cm (L) x 16cm (W) x 6cm (H)

HIGHLIGHTS



**Over 500x
Magnification**



**Automatic
Magnification Reading (AMR)**



Fine Focus Dial



**Micro Touch
Shutter Button**



PC Compatible

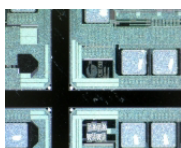


Adaptable Cap Design

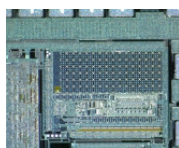
PRODUCT SUMMARY

The Dino-Lite AM4515T5 Edge series handheld microscope features high magnification (500x~550x), improved optics for sharper images, and Automatic Magnification Reading (AMR) for easy measurement. This model also features a greater working distance at high magnification, which provides more clearance between the microscope lens and the object under view. With these features, this microscope will excel in biomedical research, material analysis, electronics inspection, or any similar applications that require the examination and measurement of intricate structures. The specialized software bundled with this product (DinoCapture 2.0) allows users to calibrate the microscope, capture & annotate images, measure image features, and record video. With the Automatic Magnification Reading (AMR) feature, measuring image features becomes as easy as point-and-click. Users are not bothered with manually turning the dial, which can be helpful to prevent unintentional rotations of the dial. Other standard features include the MicroTouch shutter button for quick and convenient picture taking and eight high-intensity white LEDs that fully illuminate the viewing subject. The AM4515T5 can be used on its own as a handheld device or secured in place with a microscope stand. For tabletop usage, the Dino-Lite RK-10 universal stand is the best choice for this model, due to its precision controls and sturdy design, which make it a stable viewing platform at high magnifications. To learn more, visit the RK-10 product information page under the Accessories product category on this website.

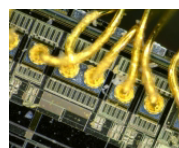
GALLERY



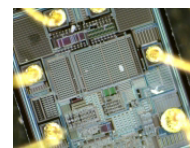
Wafer



Wafer



Integrated circuit



Integrated circuit