

# DINO - LITE *Eye*

AM4023X



Model: **AM4023X** Dino-Lite Eye

## SPECIFICATIONS

Model	AM4023X Dino-Eye	Measurement Function	Yes
Interface	USB 2.0	Calibration Function	Yes
Product Resolution	1.3M pixels (SXGA)	Operating System Supported	Window 10, 8, 7, Vista, XP MAC OS 10.4 or later
Sensor	Color CMOS		
Frame Rate	Up to 30fps	Unit Weight	100g +/- 10g
Save Formats	Image DinoCapture 2.0 : BMP, GIF, PNG, MNG, TIF, TGA, PCX, WBMP, JP2, JPC, JPG, PGX, RAS, PNM DinoXcope : PNG, JPEG Movie DinoCapture 2.0 : WMV, FLV, SWF DinoXcope : MOV	Unit Dimensions	10cm (H) x 3.2cm (D) Fit 23mm diameter eyepiece slot
		Package Dimension	16cm (L) x 16cm (W) x 6cm (H)

## HIGHLIGHTS



**Convenient Flexible Magnification**



**Automatic Magnification Reading (AMR)**



**High Optical Resolution**



**Polarizer**

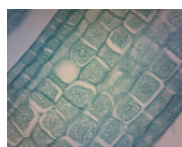


**More Viewing Options**

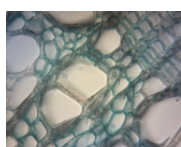
## PRODUCT SUMMARY

The Dino-Eye Premier AM4023X digital eyepiece is a very adaptable digital eyepiece that can fit 23mm, 30mm, and 30.5mm eyepiece slots with its included adapters with its tubular design that is great for setting the right focal point for different types of microscopes. It has a 1.3 Megapixels sensor with the ability for long exposures that's great for low light visibility. It allows clear and visible examination of specimens and superb viewing on a computer monitor. The Dino-Eye can be found useful in a laboratory for observation and documentation, a production line for inspection, and much more. In addition to the merit of digitization, the user can find the experience of using a microscope to be more pleasant and comfortable especially for daily microscope users.

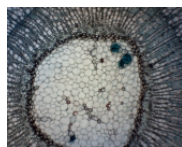
## GALLERY



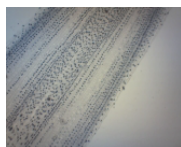
Vertical of sweet corn



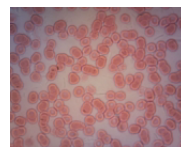
Vertical of sweet corn



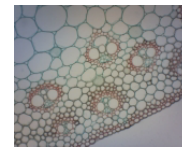
Transection of basswood



Onion



Human blood



Cross section of sunflower



AM4023X



AM4023X with 30mm Adapter



AM4023X



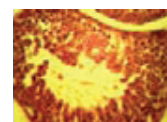
AM4023X with eyepiece



Education / Science



Printing



Eye rabbit testis